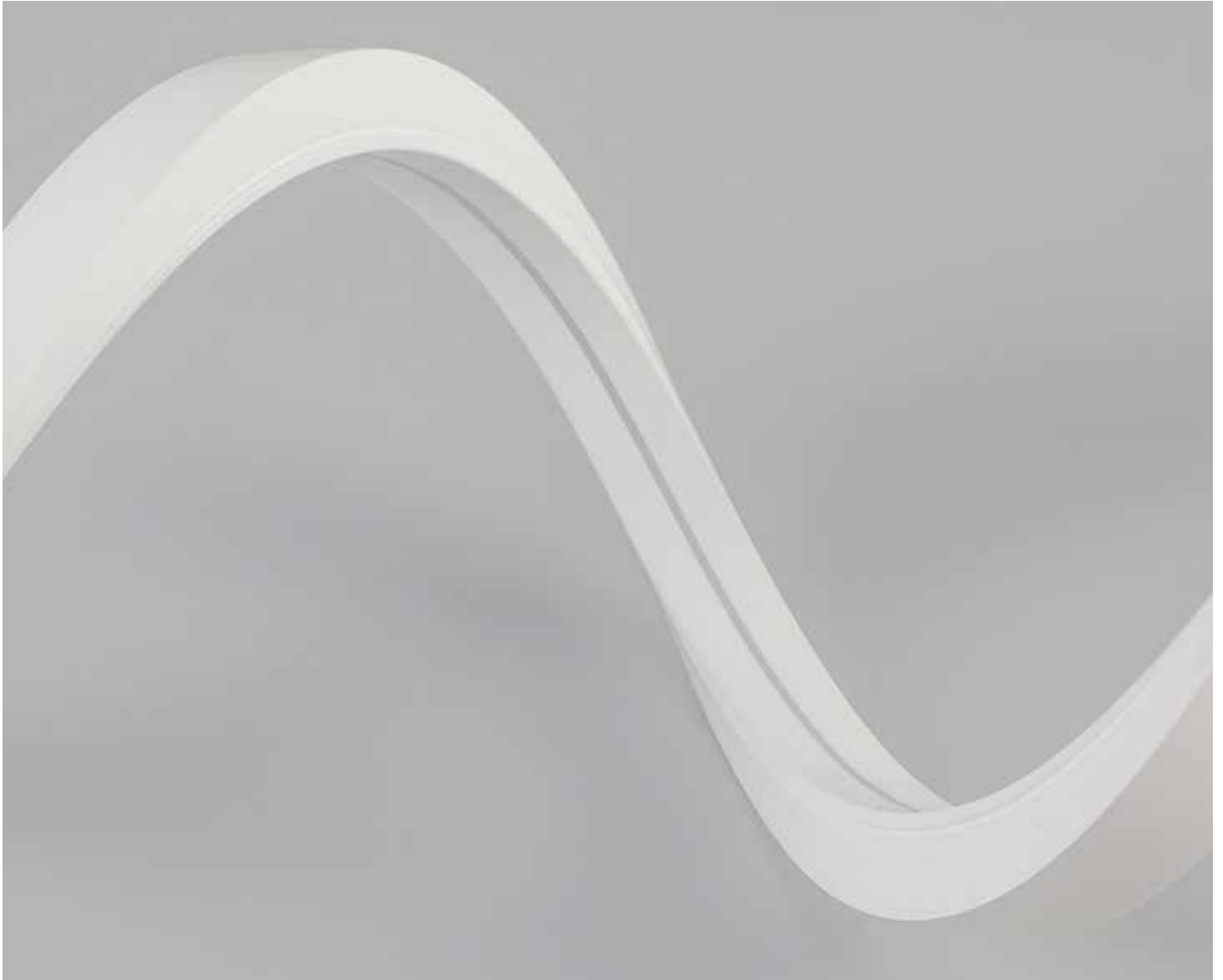


Ribbon 1616 Dual Bend



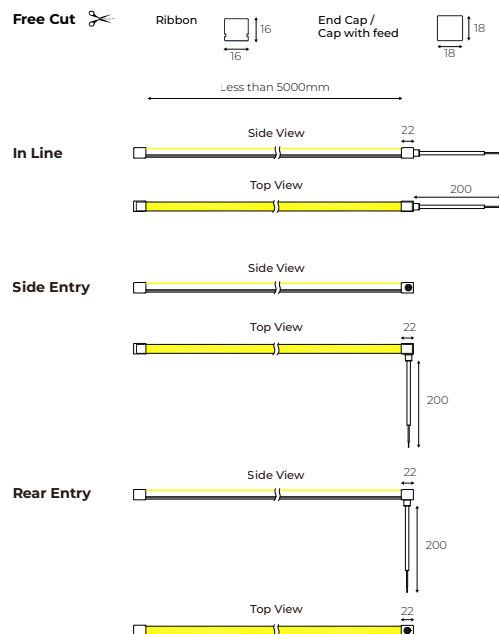
The Ribbon 1616 is a versatile, high-performance lighting solution designed for both vertical and horizontal bending applications. Featuring a flexible silicone housing and uniform light output, it offers seamless illumination with no visible light dots whilst providing durability and weather resistance. The Ribbon is energy-efficient and offers a wide range of colour changing light options. It can be used both indoors and outdoors and is ideal for curved pelmets and joinery lighting, under bench and cabinets installation, under curved canopies, signage and entertainment areas.

IP67 IK06 

Ribbon 1616 Dual Bend - Up to 5m (Free Cut)

Dimensions	5000mm (Max) x 16mm x 16mm
Code / Description	81F1616082767D / 14W/m 2700K
	81F1616083067D / 14W/m 3000K
	81F1616084067D / 14W/m 4000K (On Request)
Finish	White (WH)
Rating	IP67
Voltage	24Vdc
Light Source	LED
Lumen Output	710lm/m
Lifespan	50,000 Hrs
Cable Entry Supply	In-Line, Side Entry, Rear Entry

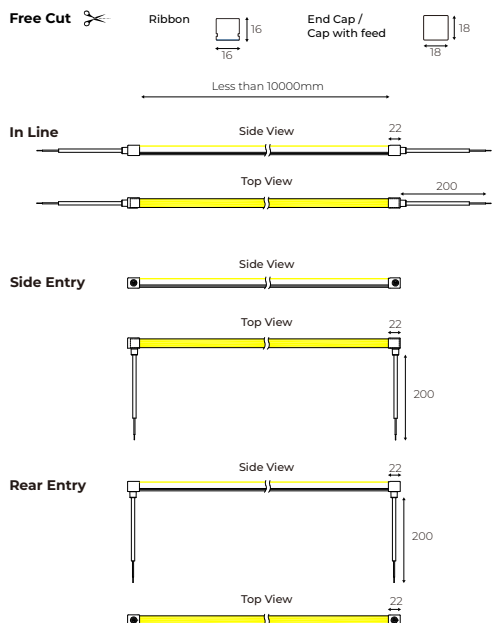
Cable Entry Orientation



Ribbon 1616 Dual Bend - Up to 10m (Free Cut)

Dimensions	10000mm (Max) x 16mm x 16mm
Code / Description	81F1616082767D / 14W/m 2700K
	81F1616083067D / 14W/m 3000K
	81F1616084067D / 14W/m 4000K (On Request)
Finish	White (WH)
Rating	IP67
Voltage	24Vdc
Light Source	LED
Lumen Output	710lm/m
Lifespan	50,000 Hrs
Cable Entry Supply	In-Line, Side Entry, Rear Entry

Cable Entry Orientation

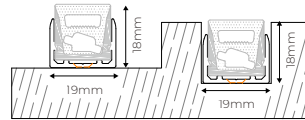
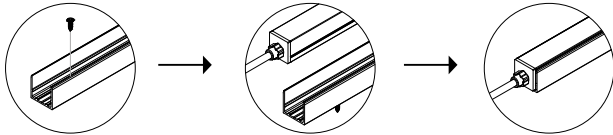


Additional Information

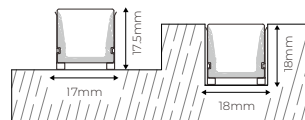
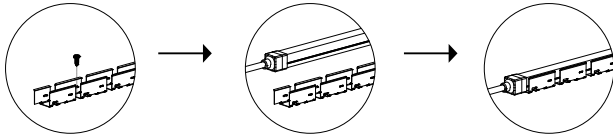
This product comes in our standard colour range however can be coloured-customised to seamlessly integrate into your space. Minimum order quantities apply. For more information please contact our customer service team on +61 03 9427 0231 or email info@sphera.com.au

Installation Surface & Recessed Mounting - Ribbon 1616 Dual Bend

Aluminium Channel Fixing



Flexible Carrier Fixing



Acessories - Ribbon 1616 Dual Bend

Aluminum Channel Fixing

Finish	Anodised
Options	Powder Coated Black / White / Custom Colour

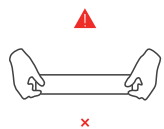


Flexible Carrier Fixing

Finish	Steel
--------	-------



Limitations



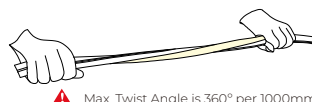
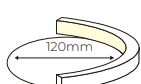
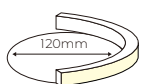
Do not stretch the ribbon



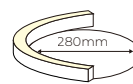
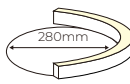
Do not apply weight or excessive pressure when installing the product.



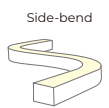
Do not walk on the product.



Max. Twist Angle is 360° per 1000mm

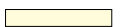


Top-bend



Side-bend

Illuminous Surface



Additional Information

This product comes in our standard colour range however can be coloured-customised to seamlessly integrate into your space. Minimum order quantities apply. For more information please contact our customer service team on +61 03 9427 0231 or email info@sphera.com.au

Acessories - Ribbon 1616 Dual Bend

In Line Entry Cap

Code	81F1616INLINE
Finish	White (WH)



Side Entry Cap

Code	81F1616SIDE
Finish	White (WH)



Rear Entry Cap

Code	81F1616REAR
Finish	White (WH)



End Cap

Code	81F1616ENDCAP
Finish	White (WH)



Additional Information

This product comes in our standard colour range however can be coloured-customised to seamlessly integrate into your space. Minimum order quantities apply. For more information please contact our customer service team on +61 03 9427 0231 or email info@sphaera.com.au