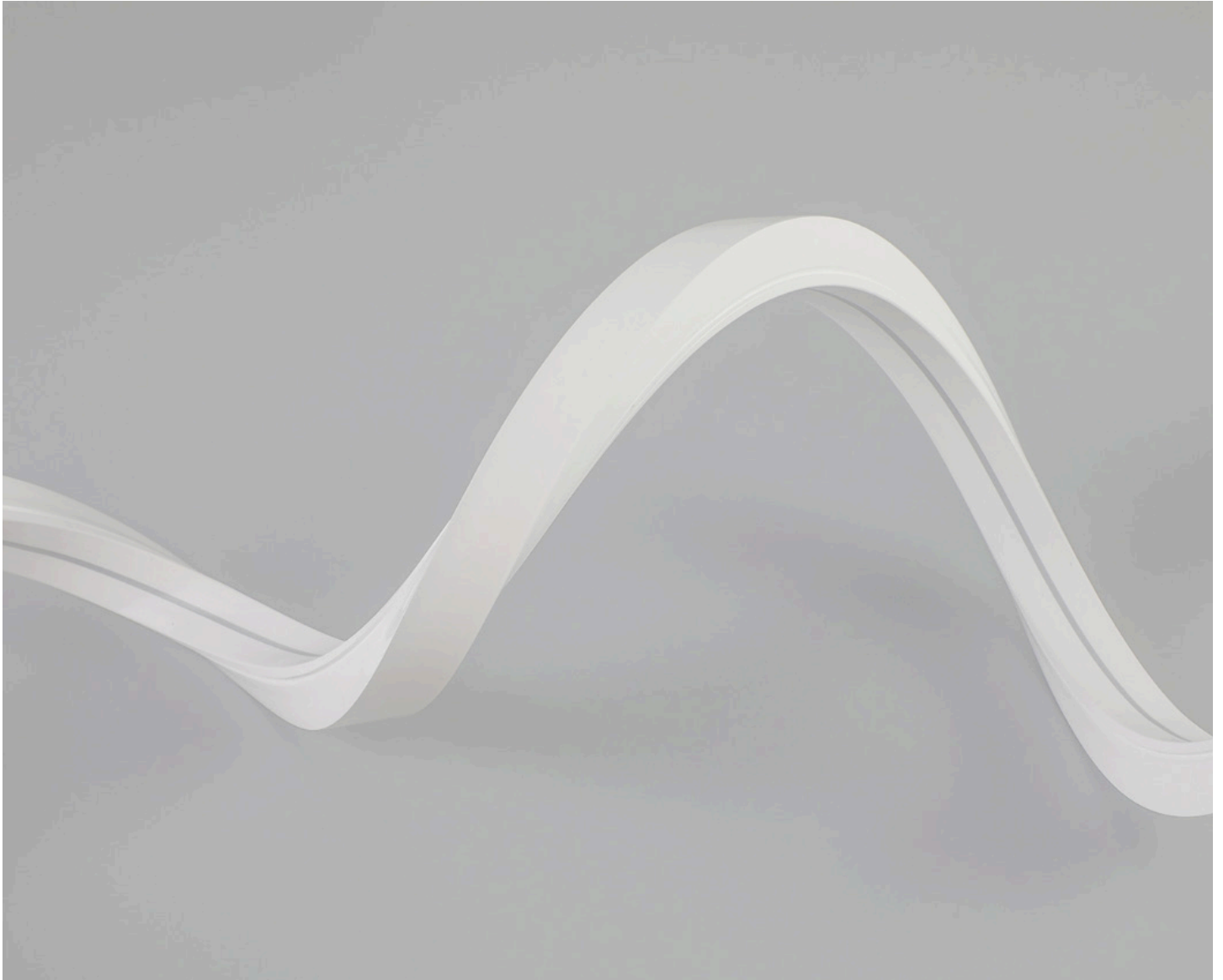


## Ribbon 1010 Dual Bend



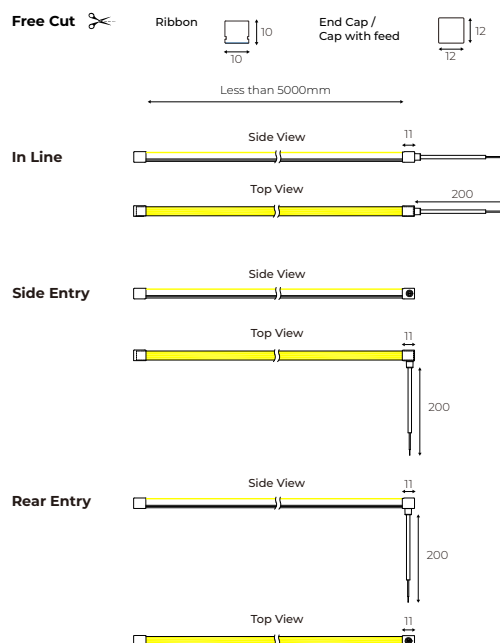
The Ribbon 1010 is a versatile, high-performance lighting solution designed for both vertical and horizontal bending applications. Featuring a flexible silicone housing and uniform light output, it offers seamless illumination with no visible light dots whilst providing durability and weather resistance. The Ribbon is energy-efficient and offers a wide range of colour changing light options. It can be used both indoors and outdoors and is ideal for curved pelmets and joinery lighting, under bench and cabinets installation, under curved canopies, signage and entertainment areas.

**IP67 IK06**    

## Ribbon 1010 Dual Bend - Upto 5m (Free Cut)

Dimensions	5000mm (Max) x 10mm x 10mm
Code / Description	81F1010082767D / 8W/m 2700K
	81F1010083067D / 8W/m 3000K
	81F1010084067D / 8W/M 4000K (On Request)
Finish	White (WH)
Rating	IP67
Voltage	24Vdc
Light Source	LED
Lumen Output	450lm/m
Lifespan	50,000 Hrs
Cable Entry Supply	In-Line, Side Entry, Rear Entry

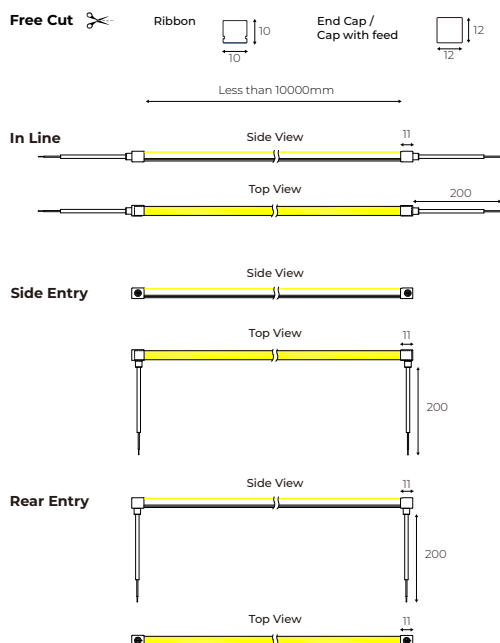
### Cable Entry Orientation



## Ribbon 1010 Dual Bend - Up to 10m (Free Cut)

Dimensions	10000mm (Max) x 10mm x 10mm
Code / Description	81F1010082767D / 8W/m 2700K
	81F1010083067D / 8W/m 3000K
	81F1010084067D / 8W/m 4000K (On Request)
Finish	White (WH)
Rating	IP67
Voltage	24Vdc
Light Source	LED
Lumen Output	450lm/m
Lifespan	50,000 Hrs
Cable Entry Supply	In-Line, Side Entry, Rear Entry

### Cable Entry Orientation

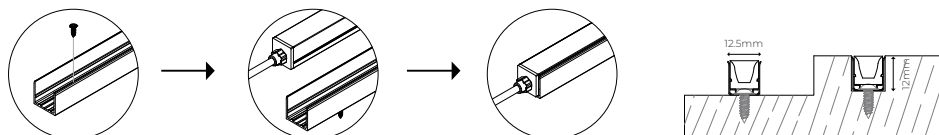


### Additional Information

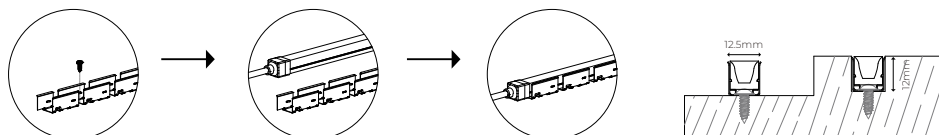
This product comes in our standard colour range however can be coloured-customised to seamlessly integrate into your space. Minimum order quantities apply. For more information please contact our customer service team on +61 03 9427 0231 or email [info@sphera.com.au](mailto:info@sphera.com.au)

## Installation Surface & Recessed Mounting - Ribbon 1010 Dual Bend

### Aluminium Channel Fixing



### Flexible Carrier Fixing



## Acessories - Ribbon 1010 Dual Bend

### Aluminium Channel Fixing

Finish	Anodised
Options	Powder Coated Black / White / Custom Colour

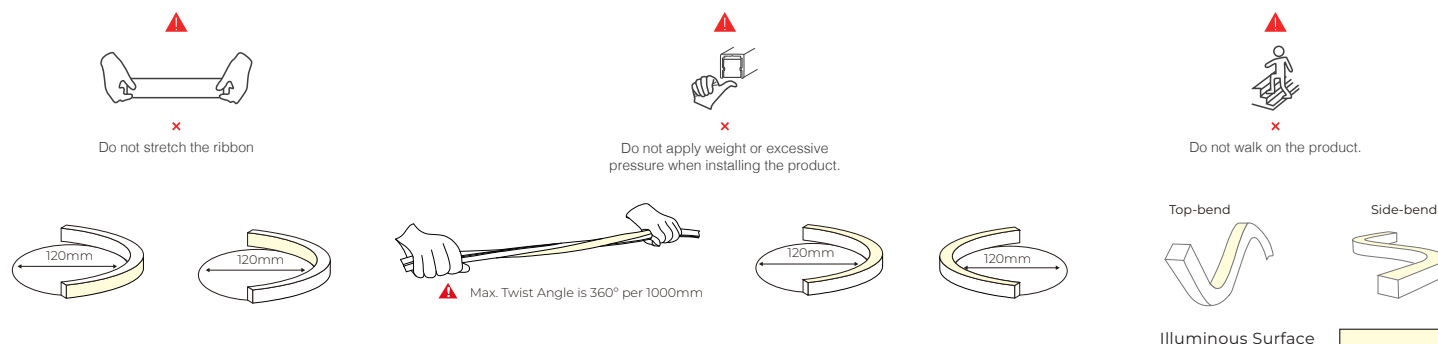


### Flexible Carrier Fixing

Finish	Steel
--------	-------



## Limitations



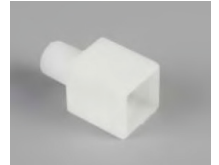
## Additional Information

This product comes in our standard colour range however can be coloured-customised to seamlessly integrate into your space. Minimum order quantities apply. For more information please contact our customer service team on +61 03 9427 0231 or email [info@sphera.com.au](mailto:info@sphera.com.au)

## Accessories - Ribbon 1010 Dual Bend

### In Line Entry Cap

Code	81F1010INLINE
Finish	White (WH)



### Side Entry Cap

Code	81F1010SIDE
Finish	White (WH)



### Rear Entry Cap

Code	81F1010REAR
Finish	White (WH)



### End Cap

Code	81F1010ENDCAP
Finish	White (WH)



### Additional Information

**This product comes in our standard colour range however can be coloured-customised to seamlessly integrate into your space. Minimum order quantities apply. For more information please contact our customer service team on +61 03 9427 0231 or email [info@sphera.com.au](mailto:info@sphera.com.au)**