

# Talon Recessed

**LIGHT THE BOND BETWEEN SPACE AND INDIVIDUAL**

Talon is a compact wall-mounted lighting fixture, available in single or dual emission and in two different sizes.

Made of die-cast and extruded aluminum with cathodolysis treatment and a layer of polyester powder coating, it is resistant to outdoor environments.

The tempered and silk-screened glass diffusers are bonded using a robotic system to ensure IP protection.

It features recessed optics and is equipped with a low-luminance screen to minimize glare.

The Power LED model comes with a transparent, silk-screened tempered glass diffuser, while the Mid-power LED model is provided with sandblasted glass to ensure uniform light emission.

In the 'recessed' version, the front frame is made of white-painted stainless steel, and installation is carried out using stainless steel springs for false ceilings, or alternatively with a casing for solid walls.

*Talon è un apparecchio per installazione a parete compatto, disponibile con mono o bi-emissione in due diverse misure.*

*In alluminio pressofuso ed estruso trattamento di cataforesi e strato di vernice di polvere di poliestere resistente agli ambienti esterni, i diffusori in vetro temprato e serigrafato sono incollati tramite sistema robotico a garanzia della tenuta IP.*

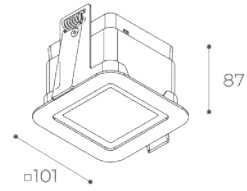
*Caratterizzato da ottica arretrata e dotato di schermo a bassa luminanza per ridurre al massimo l'abbagliamento.*

*Per il modello con Power Led il diffusore è in vetro serigrafato trasparente temprato, mentre il modello Mid-power Led viene fornito con vetri sabbiati per garantire un'emissione luminosa omogenea.*

*Nella versione "recessed" la ghiera frontale è realizzata in acciaio INOX verniciato bianco, l'installazione avviene mediante delle molle in acciaio inox per i controsoffitti o in alternativa con casafirma per il muro pieno.*



# Talon Recessed

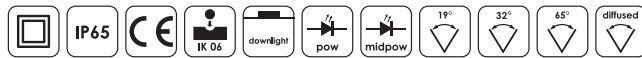


Available finishes:



**Light Source** power led / mid power led  
**Supply** 220-240V  
**Dimmer** upon request  
**CRI** ≥80  
**IP rating** IP65  
**Electrical Class** II  
**Application** ceiling  
**Diffuser** transparent glass / sandblasted

**Power** 220-240V 8,2Wled 10,7  
 4,8Wled 5,8We  
**Led Colour temp.** 2700K / 3000K



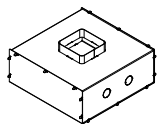
				lm	white
2700K	220- 240V	19°	▲	756	901131162
8,2 Wled		32°	▲	760	901131172
10,7 We		65°	▲	722	901131182

2700K	220- 240V	diffused	☺	481	901131192
4,8 Wled					
5,8 We					

				lm	white
3000K	220- 240V	19°	▲	796	901111162
8,2 Wled		32°	▲	800	901111172
10,7 We		65°	▲	760	901111182

3000K	220- 240V	diffused	☺	506	901111192
4,8 Wled					
5,8 We					

## ACCESSORIES



*Metal box for concrete installation*  
262x265x125mm

code **9078**

---



ACCESSORIES:

code **9078**