

Divar Wall 200

ILLUMINATING MEANS GIVING PLACE

Divar is a compact wall-mounted lighting fixture, available in single or dual emission and in two different sizes.

Made of die-cast and extruded aluminum with cathodolysis treatment and a layer of polyester powder coating, it is resistant to outdoor environments.

The tempered and silk-screened glass diffusers are bonded using a robotic system to ensure IP protection.

It features recessed optics and is equipped with a low-luminance screen to minimize glare.

The Power LED model comes with a transparent, silk-screened tempered glass diffuser, while the Mid-power LED model is provided with sandblasted glass to ensure uniform light emission.

In the 'recessed' version, the front frame is made of white-painted stainless steel, and installation is carried out using stainless steel springs for false ceilings, or alternatively with a casing for solid walls.

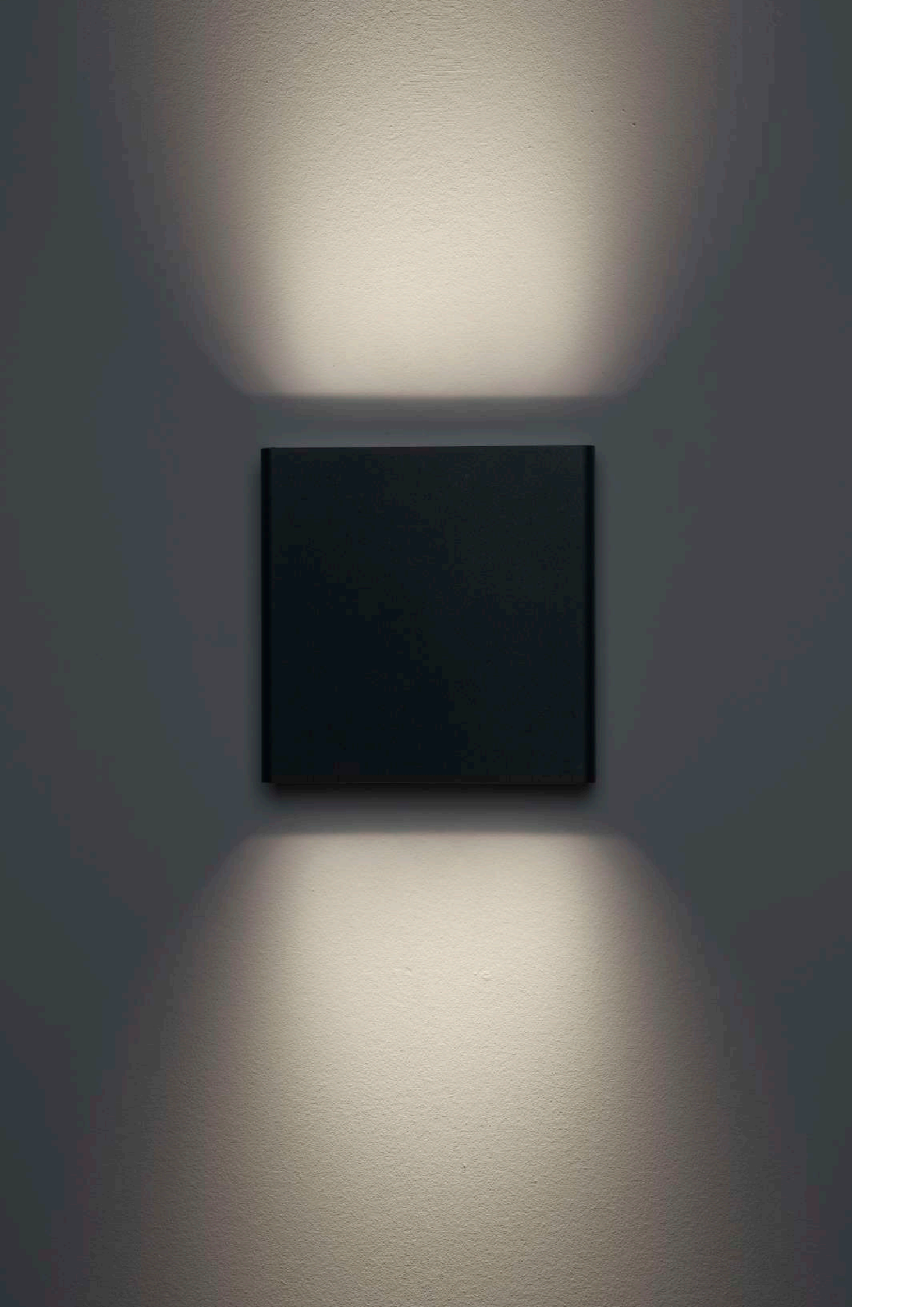
Divar è un apparecchio per installazione a parete compatto, disponibile in mono o bi-emissione in due diverse misure.

In alluminio pressofuso ed estruso trattamento di catodolisi e strato di vernice di polvere di poliestere resistente agli ambienti esterni, i diffusori in vetro temprato e serigrafato sono incollati tramite sistema robotico a garanzia della tenuta IP.

Caratterizzato da ottica arretrata e dotato di schermo a bassa luminanza per ridurre al massimo l'abbagliamento.

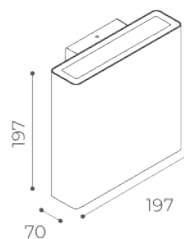
Per il modello con Power Led il diffusore è in vetro serigrafato trasparente temperato, mentre il modello con Mid-power Led viene fornito con vetri sabbiati per garantire un'emissione luminosa omogenea.

Nella versione "recessed" la ghiera frontale è realizzata in acciaio INOX verniciato bianco, l'installazione avviene mediante delle molle in acciaio inox per i controsoffitti o in alternativa con casafirma per il muro pieno



Divar 200

wall double emission



Available finishes:

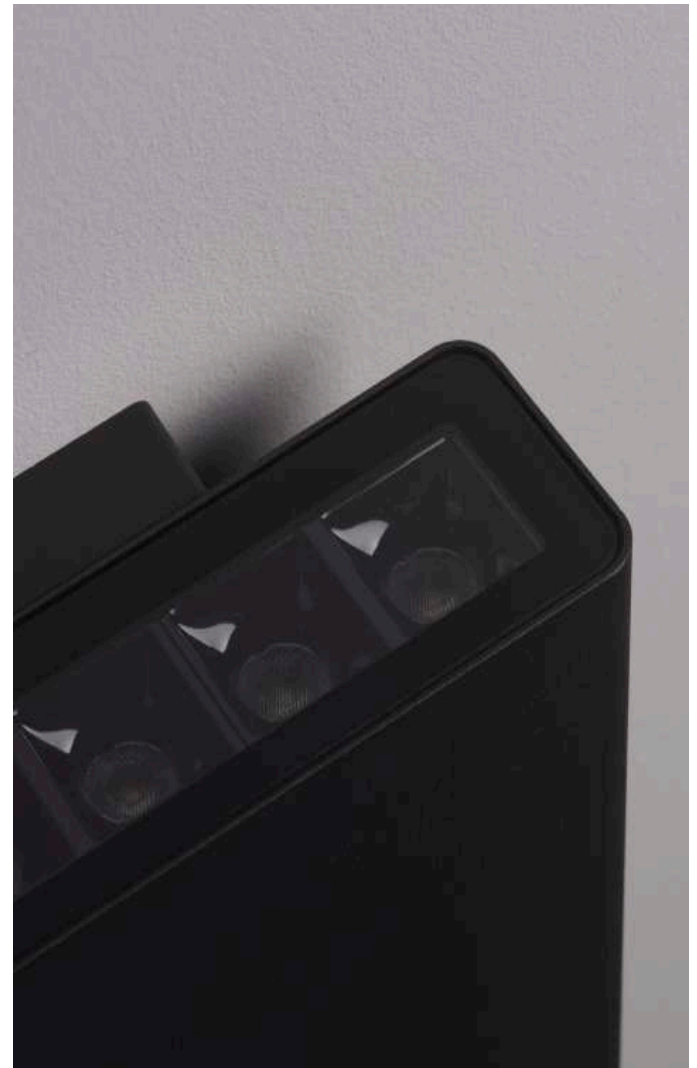


Light Source power led
Supply 220-240V
Dimmer upon request
CRI ≥80
IP rating IP65
Electrical Class I
Application wall
Diffuser transparent glass

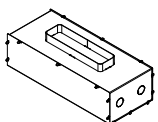
Power 220-240V 2x12,1Wled 29,7We
Led Colour temp. 2700K / 3000K



				lm	white	sand	graphite	aluminium	corten	green
2700K 2x12,1Wled 2x15,4 We	220-240V	19°	▲	2x1095	901031002	901031003	901031004	901031005	901031008	9010310016
		32°	▲	2x1118	901031102	901031103	901031104	901031105	901031108	9010311016
		65°	▲	2x1080	901031112	901031113	901031114	901031115	901031118	9010311116
3000K 2x12,1Wled 2x15,4 We	220-240V	19°	▲	2x1153	901011002	901011003	901011004	901011005	901011008	9010110016
		32°	▲	2x1177	901011102	901011103	901011104	901011105	901011108	9010111016
		65°	▲	2x1137	901011112	901011113	901011114	901011115	901011118	9010111116



ACCESSORIES



Metal box for concrete installation
385x162x125mm

code **9079**