

**diomede**

let there be light

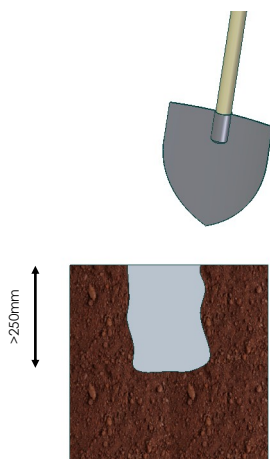
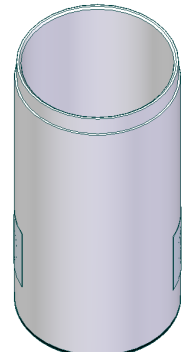
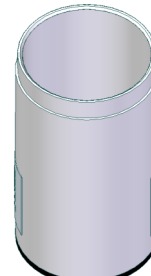
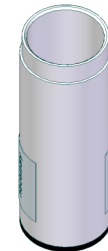
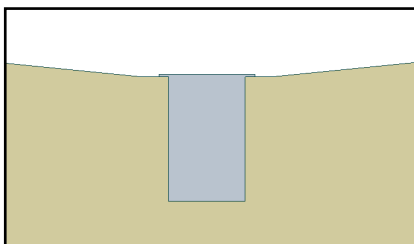
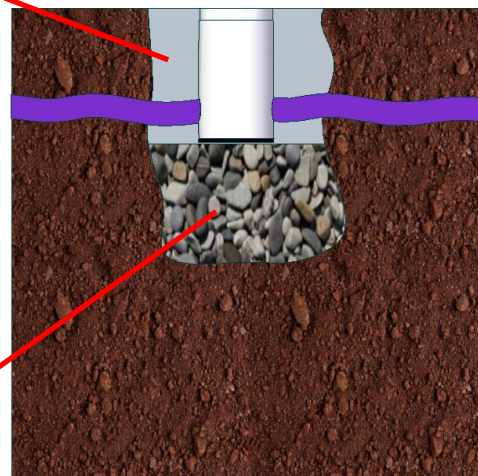
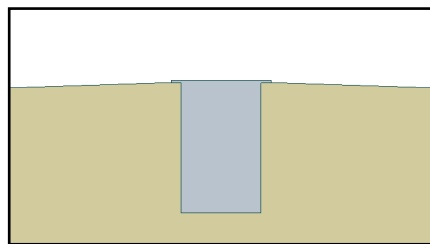
Via Meucci, 5 Ornago 20876 (MB) ITALY info@diomedelight.com www.diomedelight.com

1020R0DC

12500007

**Zero45 Zero65 Zero85****9001xxxx**Incassi a terra  
Ground Recessed

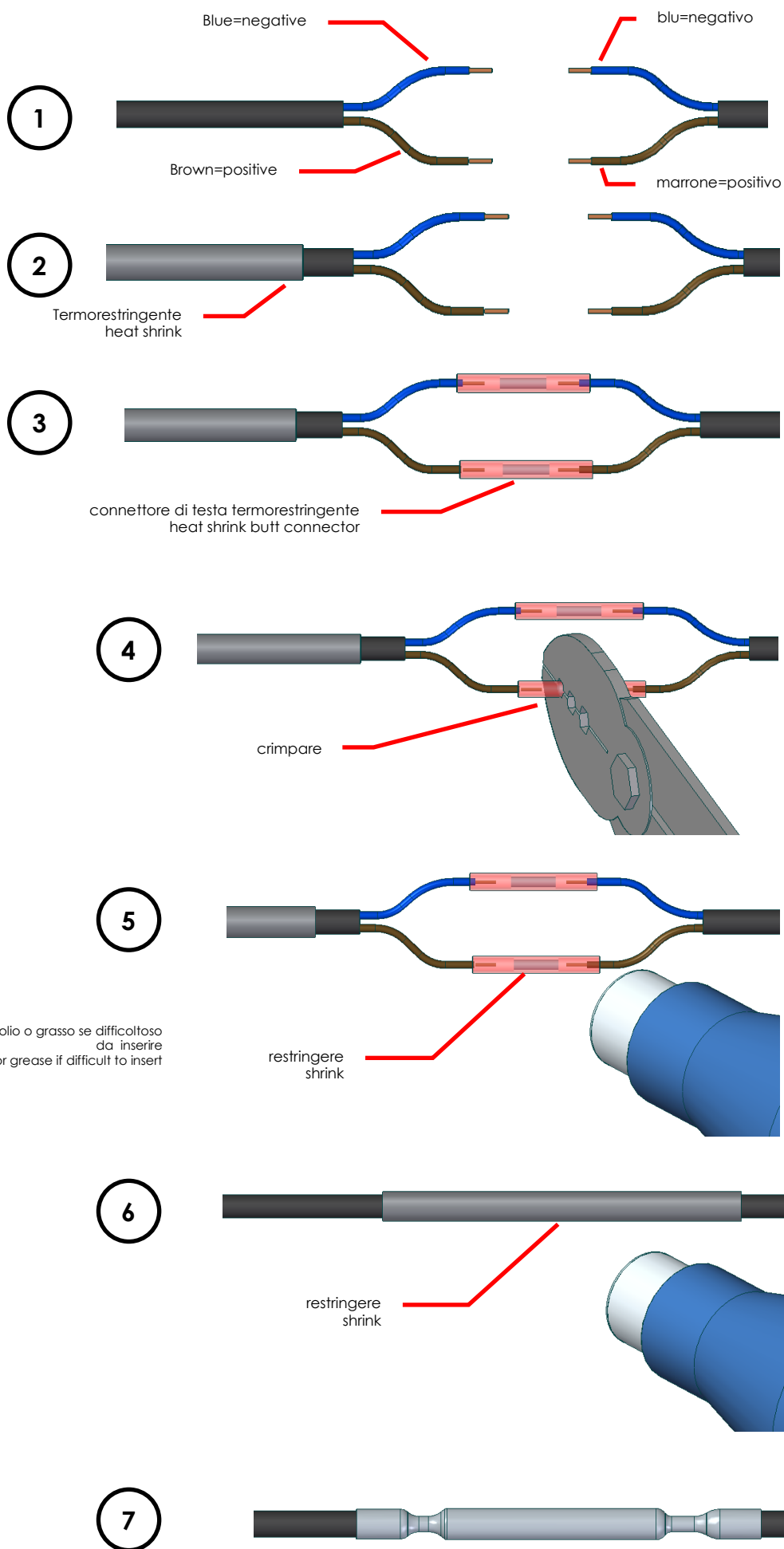
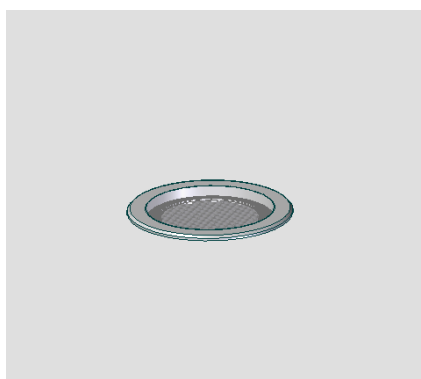
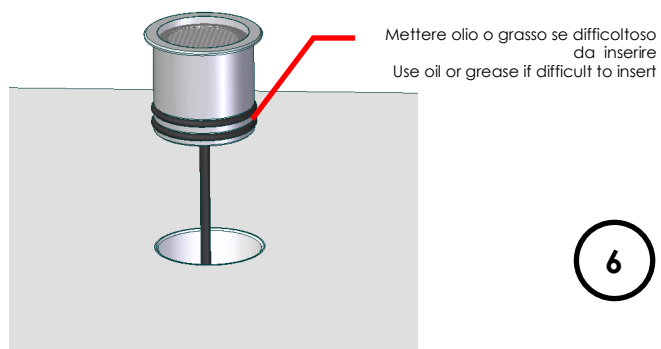
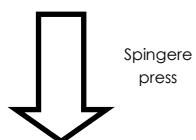
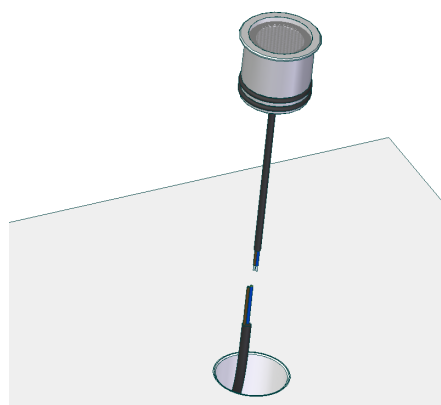
IP67 -24Vdc/230V -3000/4000K - made in Italy -

Dimensioni cassaforma:  
Recessed box:concrete  
cementoGhiaia lavata/  
washed gravel**NO****YES**

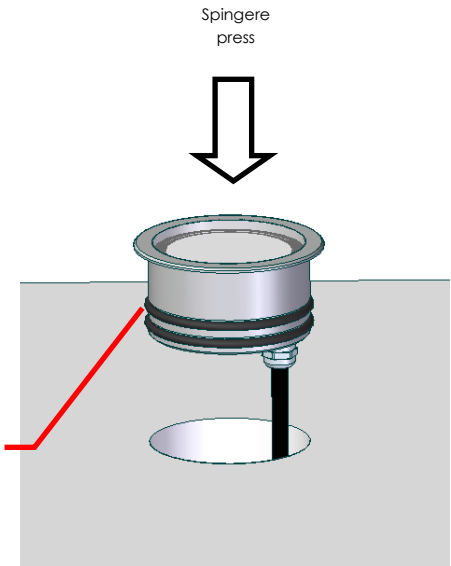
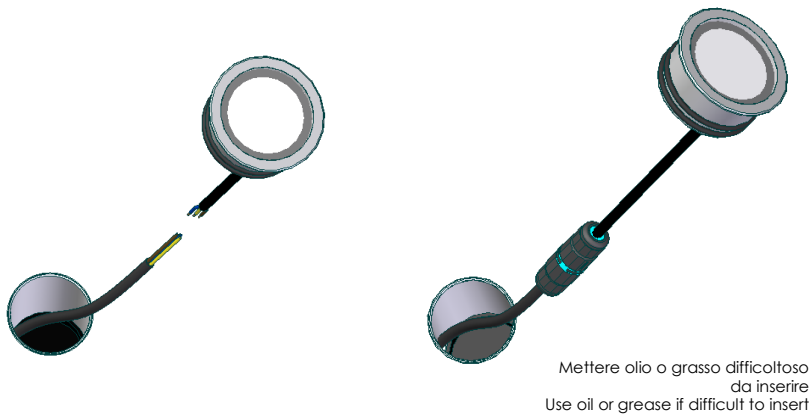
IP67 garantisce la resistenza all'immersione in acqua per 30 minuti alla profondità compresa fra 15cm e 1m; l'installazione in avvallamenti è da evitare perché non garantisce il corretto deflusso dell'acqua.

IP67 protected against the effect of immersion in water between 15cm and 1 meter for 30 minutes; do not install in hollow areas to avoid water stagnation.

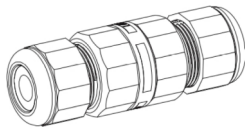
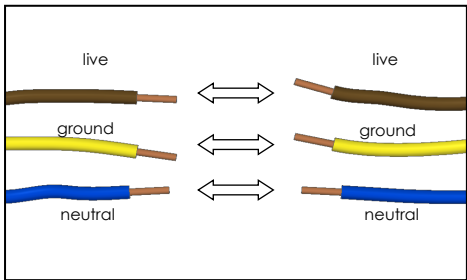
Installazione versione Zero45 e Zero65 24Vdc:  
Zero45 and Zero65 24Vdc installation:



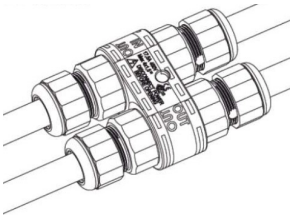
Installazione versione Zero85:  
Zero85 installation:



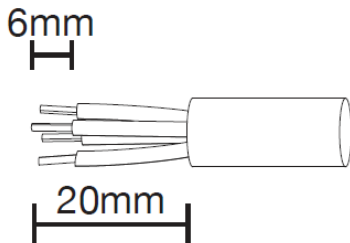
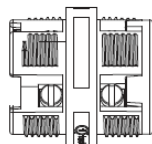
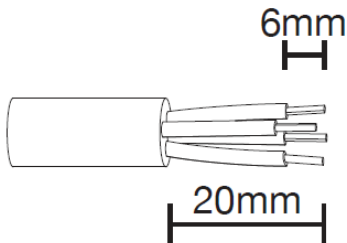
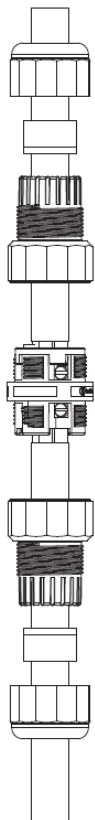
Usare obbligatoriamente connettore fornito o altro sistema garantito IP67 altri sistemi di connessione non proteggono dalla formazione di condensa interna.  
It is mandatory the use of supplied connector or IP67 connection system, any other type of connection will not ensure moist protection.



Connettore fornito  
Supplied connector

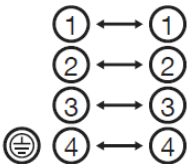


Connettore 3/4 vie opzionale  
Optional connector



Connessione elettrica:  
Wiring connection:

2-3-4 POLES



**diomede**  
let there be light

Via Meucci, 5 Ornago 20876 (MB) ITALY info@diomedelight.com www.diomedelight.com

1121R0DC

12500038

## Zero110

Incassi a terra  
Ground Recessed

Zero110  
24Vdc

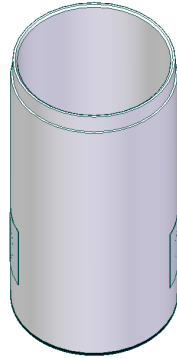


9001xxxx

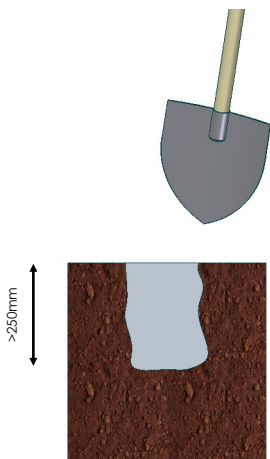


IP67 -24Vdc-3000/4000K - made in Italy -

Dimensioni cassaforma:  
Recessed box:

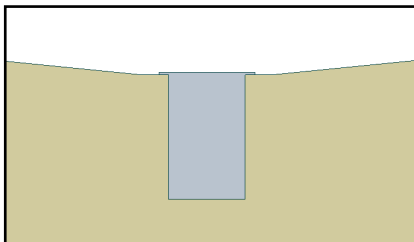
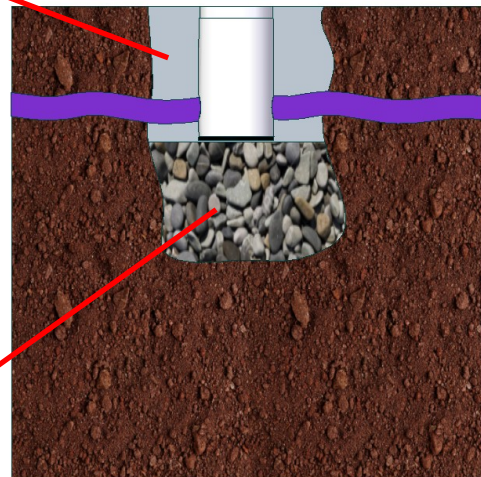


Φ100x205mm

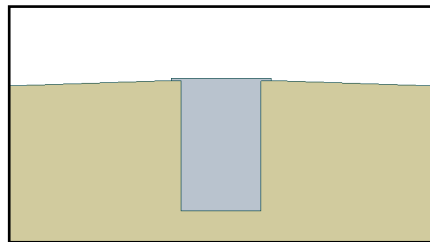


concrete  
cemento

Ghiaia lavata/  
washed gravel



NO



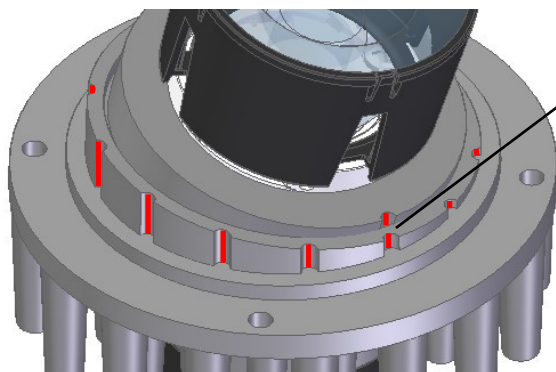
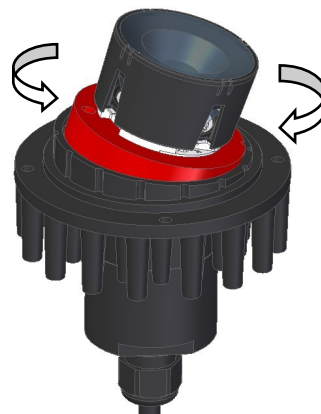
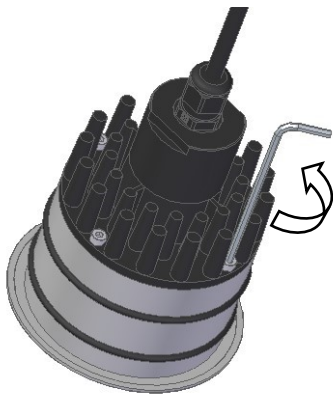
YES

IP67 garantisce la resistenza all'immersione in acqua per 30 minuti alla profondità compresa fra 15cm e 1m; l'installazione in avvallamenti è da evitare perché non garantisce il corretto deflusso dell'acqua.

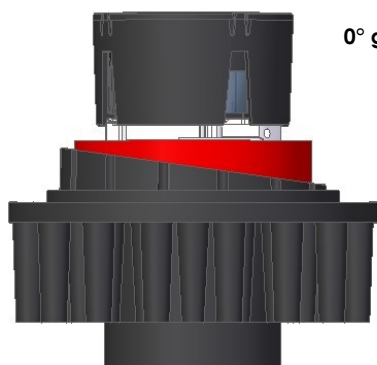
IP67 protected against the effect of immersion in water between 15cm and 1 meter for 30 minutes; do not install in hollow areas to avoid water stagnation.

Come inclinare il fascio:  
How to tilt the beam:

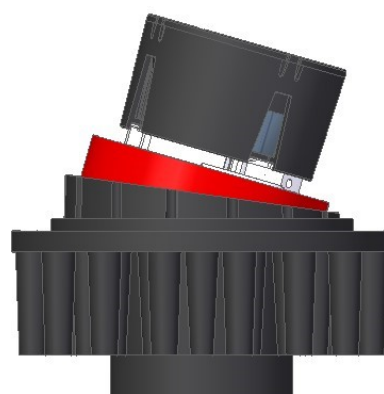
Aprire il fondo svitando le 4 viti  
Open the bottom (4 screws)



TACCHE DI RIFERIMENTO  
REFERENCE MARKS



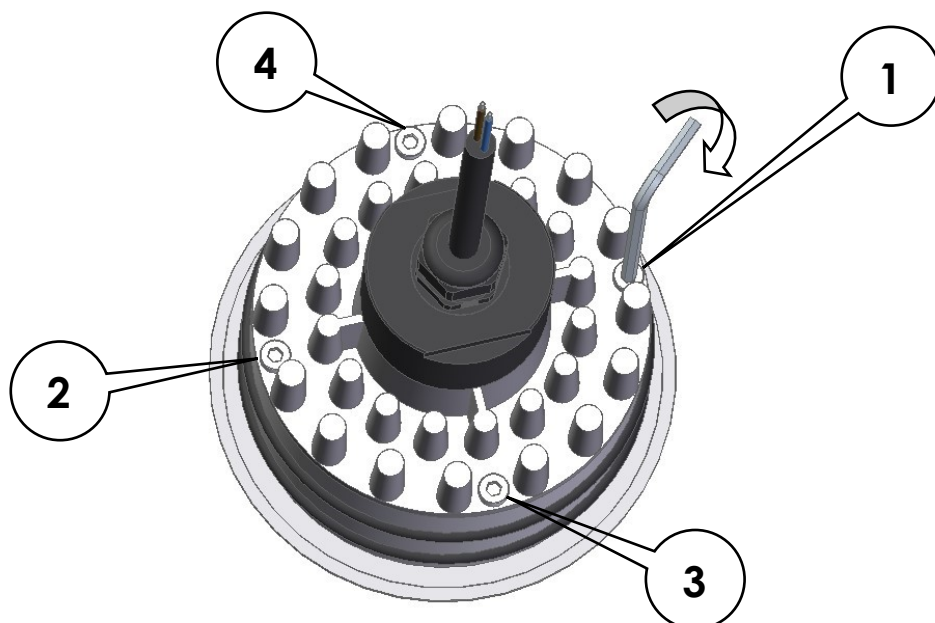
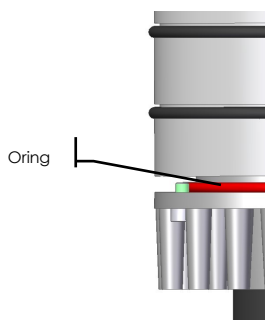
0° gradi/degree



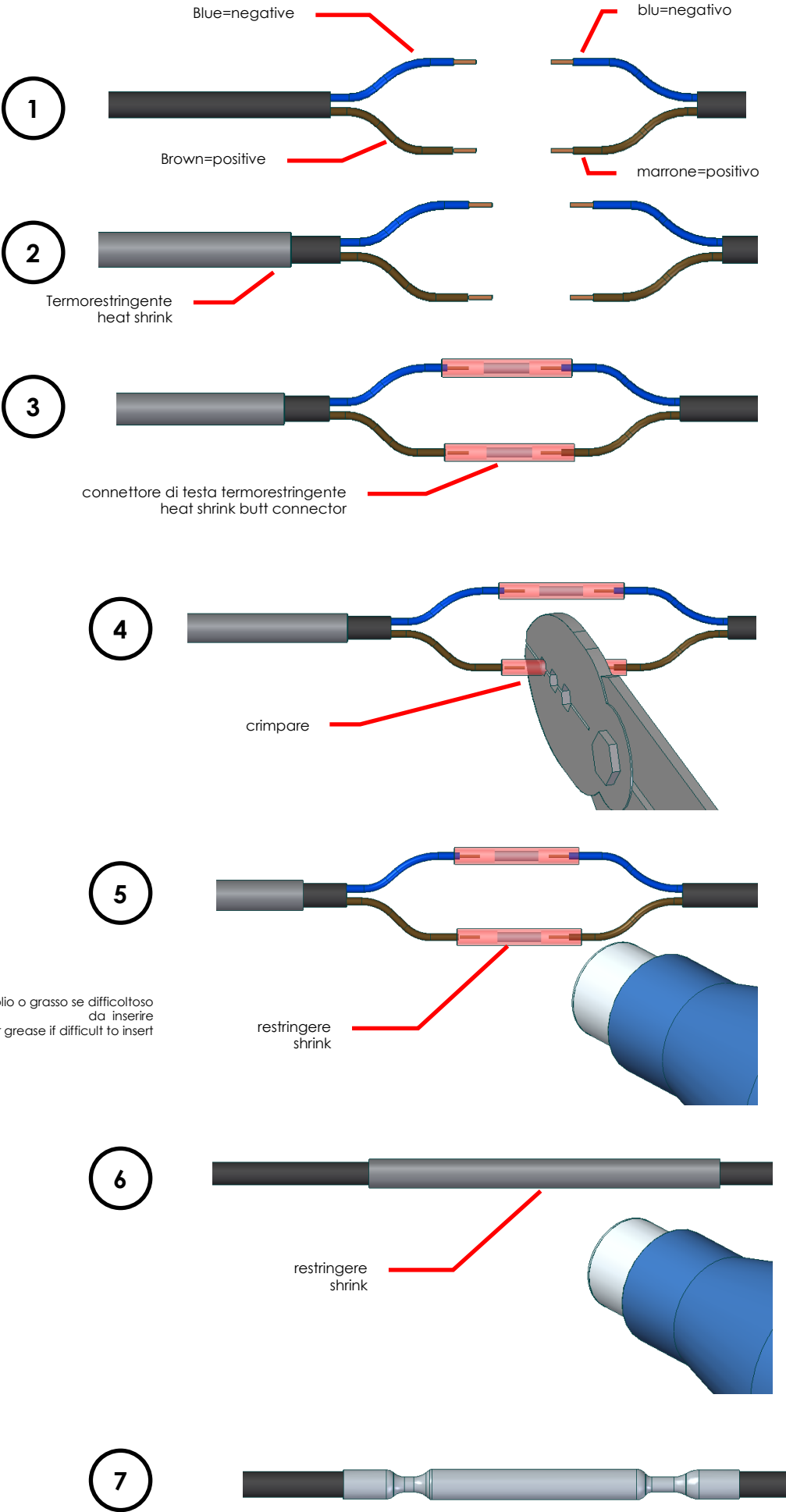
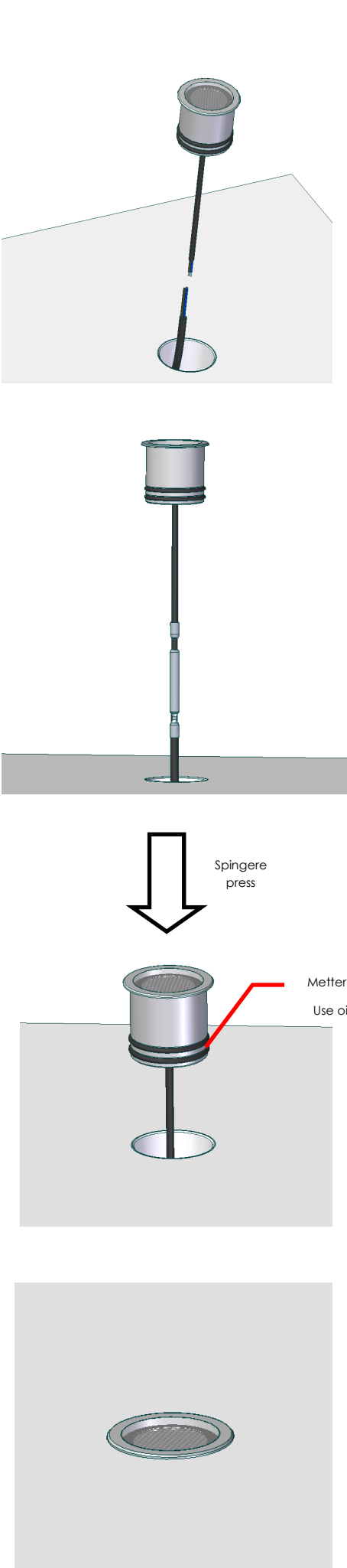
16° gradi/degree max

Rimontare l'apparecchio verificando la  
presenza dell'oring e serrando uniforme-  
mente e in modo incrociato le quattro viti  
di tenuta.

Mount the fixture with oring by tightening  
the four screws uniformly and crosswise



Installazione versione Zero110 24Vdc:  
Zero110 24Vdc installation:





L'installazione dell'apparecchio deve essere effettuata da personale qualificato e in osservanza delle disposizioni nazionali di sicurezza.

The installation and maintenance of the fixture must be carried out by qualified staff and always be in compliance with local regulation in force.



Prima di effettuare qualsiasi intervento sull'apparecchio togliere l'alimentazione elettrica;

il produttore non si assume alcuna responsabilità per danni causati dall'impiego o installazione non appropriate.

Be sure the fixture is disconnected from the power before executing maintenance. Manufacturer won't be responsible for damages arising from the use or wrong installation of the fixture.



La sicurezza dell'apparecchio è garantita solo con l'uso appropriato delle seguenti istruzioni, pertanto è necessario conservarle. Safety of the fixture is granted only by respecting the installation manual therefore it is important to keep it for future consulting.



Non fissare direttamente la sorgente luminosa durante il suo funzionamento. Gruppo di rischio 1

Do not look directly at the light source. Risk Group 1



Direttiva 2002/96/CE rifiuti di apparecchiature elettriche ed elettroniche /RAEE:

Directive 2002/96/CE Waste Electrical & Electronic Equipment (WEEE)

A fine vita dell'apparecchio togliere l'alimentazione effettuare lo smontaggio e conferire tale prodotto negli idonei centri di raccolta differenziata dei rifiuti RAEE (Rifiuti Elettronici ed Elettrotecnici) oppure riconsegnandoli al rivenditore al momento dell'acquisto di nuova apparecchiatura. Tale operazione permette, grazie al riciclo differenziato, di dare nuova vita ai materiali componenti diminuendo l'impatto ambientale.

At the end of the fixture's life, disconnect it from the mains and disassemble it and send it to the appropriate waste collection center in compliance with WEEE (Electronic and Electro-technical Waste) or return it to the retailer when purchasing new equipment. This operation allows, thanks to differentiated recycling, to give new life to the components and to reduce the environmental impact



L'installazione all'esterno (prati, giardini, aiuole) comporta particolare attenzione all'interazione chimica con i prodotti fertilizzanti, diserbanti, calce e prodotti chimici in genere. Evitarne il contatto diretto con l'apparecchio.

Outdoor Installation ( garden, ) requires attention on the use of chemical agents and material containing them ( lime, fertilizer weedkiller..): avoid the direct contact with the fixture.



Evitare per quanto possibile l'installazione all'esterno in condizioni climatiche avverse (pioggia forte umidità) per evitare accumulo di condensa all'interno in caso di apertura del prodotto.

Avoid the maintenance and installation in presence of high humidity or rain, in order to avoid accumulation of moist internally the fixture.



Il sistema di connessione per gli apparecchi IP deve avere un grado di protezione uguale o superiore al grado IP dell'apparecchio.

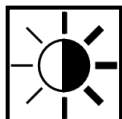
The connection must be done of the same of higher IP degree of the fixture.



In caso di rottura dello schermo o di qualsiasi altra parte (led compresi) l'apparecchio non può essere utilizzato.

Contattare Diomedee per la sostituzione della parte danneggiata.

In case of breaking of any part (even the light source) the fixture should not operate and the replacement of any part should be made by authorized personell only, please contact DIOMEDE for more information.



Evitare l'accensione dell'apparecchio durante le ore di esposizione solare.

Avoid turning on the device during hours of sun exposure.